

Roller Banners

Barracuda - Code WH321C **NEW**

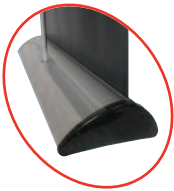
A very popular, strong but stylish design, proven as a reliable banner for regular use. Ideal for simple displays or exhibitions.

- Available in 2 widths
- Available in anodised silver
- Quick change graphic slider
- Ratchet graphic tensioner
- Larger internal graphic housing
- Universal grippa/adhesive top rail
- Patented quick change graphic slider
- Telescopic pole
- Premium carry bag

Visible Graphic Area:

H - 750 - 2130mm
W - 800 or 1000mm

(All sizes are approximate)



Excaliber 1 and 2 **NEW**

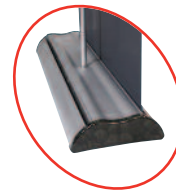
A popular and versatile banner, ideal for exhibition or showroom graphic display.

- Can be used as a single or double-sided
- Wide footprint for extra stability
- Available in 5 widths
- Available in anodised silver
- Quick change graphic slider
- Ratchet graphic tensioner
- Larger internal graphic housing
- Universal grippa/adhesive top rail
- Telescopic pole
- Patented quick change graphic slider
- Premium carry bag

Visible Graphic Area:

H - 750 - 2130mm
W - 800 - 2000mm*

(All sizes are approximate)



WH301C (single)

WH311C (double)

(*Excaliber 2 only available as 800 or 1000mm widths)



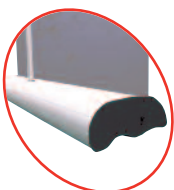
Original Banner 2 - Code UB321 **Improved**

- Increased internal housing for thicker graphics (up to 450 microns)
- Quick-change graphic release
- Twista Plus snap rail or universal rail
- Anodised silver or textured black powdercoat
- Bungee pole
- Available in 6 widths
- Padded carry bag

Visible Graphic Area:

H - 2145mm
W - 600 - 2000mm

(All sizes are approximate)



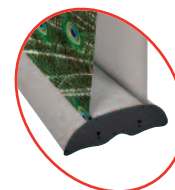
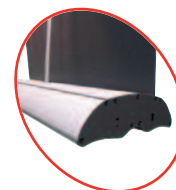
Original Banner 3 **Improved**

- Increased internal housing for thicker graphics (up to 450 microns)
- Quick-change graphic release
- Twista Plus snap rail or universal rail
- Anodised silver or textured black powdercoat
- Bungee pole
- Available in 6 widths
- Padded carry bag

Visible Graphic Area:

H - 2145mm
W - 600 - 2000mm

(All sizes are approximate)



UB301 (single)

UB311 (double)

