

# Roller Banners

## Blade - Code UB507C **Improved** (New this Spring)

- New styling
- High specification finish and cast chrome metal end plates
- Access roller via flip-top lid
- Removable self-locking graphic roller
- Quick change graphic slider
- Adjustable feet on base, useful, for example on uneven floors
- Premium carry bag
- Available in 800 and 1000mm widths
- Increased internal housing for thicker graphics (up to 450 microns)
- Fixed height bungee pole



### Visible Graphic Area:

**H - 2120mm**  
**W - 800 or 1000mm**

(All sizes are approximate)



## Orient 1 and Orient 2

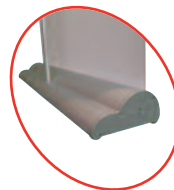
This smart roller banner is styled on a highly popular base profile, with a substantial anodised silver casing, providing the perfect combination of design with stability.

- Orient 2 can be used as a single or double-sided unit
- Reusable spring loaded rail clamp system for easy graphic application
- Quick change graphic slider
- Available in 2 widths in anodised silver
- Quality foam padded carry bag
- Fixed height bungee pole

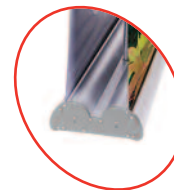
### Visible Graphic Area:

**H - 2110mm**  
**W - 800 or 1000mm**

(All sizes are approximate)



WH353 (single)



WH355 (double)



## Pacific - Code WH351

A quality lightweight roller banner with slim base and bungee pole making it very compact, complete with a twist out foot for extra stability.

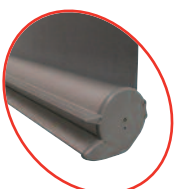
- Reusable spring loaded rail clamp system for easy graphic application
- Available in anodised silver
- Quick change graphic slider
- Available in 2 widths
- Includes quality carry bag



### Visible Graphic Area:

**H - 2130mm**  
**W - 800 or 1000mm**

(All sizes are approximate)



## ECO - Code UB198 **NEW**

An economy roller banner with designer base and bungee pole making it very lightweight and compact, complete with a twist out foot for extra stability.

- Funky shape with lightweight components
- Quick change snap rail for easy graphic application
- Low profile hook/loop fastening for quick change graphic application
- Twist out stabilising foot for extra stability
- Anodised silver with black end-plates
- Padded carry bag

### Visible Graphic Area:

**H - 2010mm**  
**W - 800 and 1000mm**

(All sizes are approximate)

